

Projector USB Drivers Installation Guide

Ver 5.02

The document is to describe a Windows application software “**Flash-Tool**” for projector firmware. Its main purpose is to provide a detailed procedure of upgrading the application software of a DLP projector. The system requirement and the installation procedure of “**Flash-Tool**” are also included in the document.

NOTE:

User must have administrative privileges on the target computer in order to install the driver. (The installation target directory must not be write-protected.)
User also required having the basic knowledge of Windows application installation.

Attention: This utility is for DLP™ DDP2000/3020 series projectors only.

System Requirement

- IBM compatible PC.
- Windows XP-SP2 operating system.

Install Flash-Tool to PC

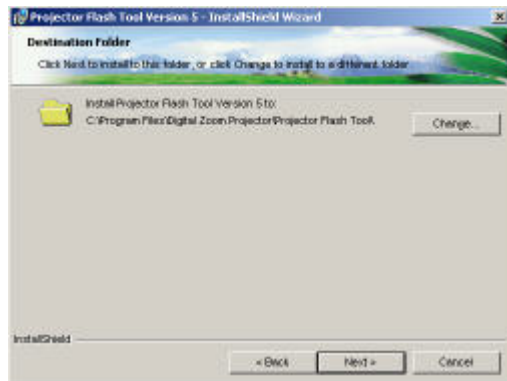
Run the “Digital Zoom Projector Flash Tool Vx.y.msi”, that will automatically launch the USB drivers update. The following pictures are illustrating the process of the USB Driver installation.

Start-up page:



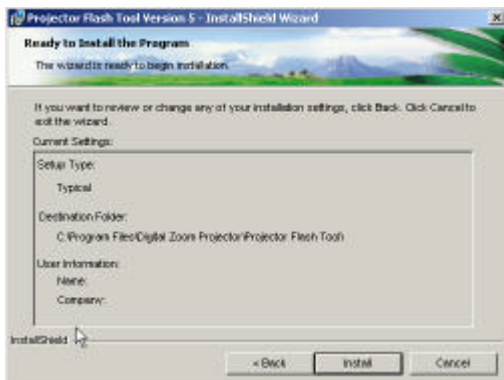
- Click on the “**Next**” button to continue
- or
- Click on the “**Cancel**” button to cancel the installation

Driver Destination:



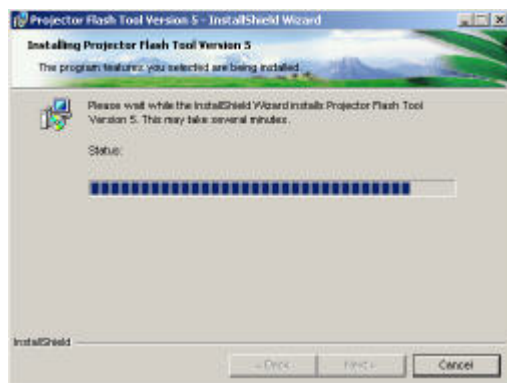
- Click on the **“Change”** button to change the default directory for saving the driver file somewhere else.
- or
- Click on the **“Back”** button to return to the previous page
- or
- Click on the **“Cancel”** button to cancel the installation

Ready to Install:



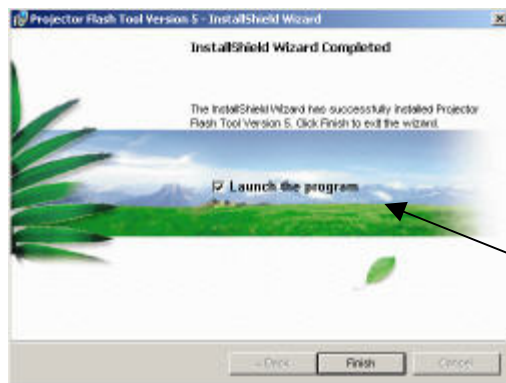
- Click on the **“install”** button to start the driver installation.
- or
- Click on the **“Back”** button to return to the previous page
- or
- Click on the **“Cancel”** button to cancel the installation

Installation in Progress:



- Please wait for the installation to complete.

Installation Completed:



- Click on the “**Finish**” button with the “**Launch**” checkbox checked so that the Install Wizard will start the USB driver (INF) update.

**Launch the
driver update**

Note: The USB driver (INF) update may take a few minutes depending your computer’s performance, and number of driver files. All dialogs will be automatically closed when the installation is completed.

```

C:\WINDOWS\system32\cmd.exe
Updating Projector USB drivers...

Searching for old INF files...
(Be patient! May take several minutes!)

```

The Install Wizard is searching for the old driver files to be replaced with the new ones.

```

C:\WINDOWS\system32\cmd.exe
Updating Projector USB drivers...

Searching for old INF files...
(Be patient! May take several minutes!)
(Renaming C:\WINDOWS\INF\ProjectorControl.inf to C:\WINDOWS\INF\ProjectorControl.inf.backup)

Installing WinDriver6...
Registering Projector USB Control with WinDriver6...

```

- Remove the USB cable between PC and projector if it is connected.

The WinDrive USB drivers will be installed and registered to the system.

```

C:\WINDOWS\system32\cmd.exe
Updating Projector USB drivers...

Searching for old INF files...
(Be patient! May take several minutes!)
(Renaming C:\WINDOWS\INF\ProjectorControl.inf to C:\WINDOWS\INF\ProjectorControl.inf.backup)

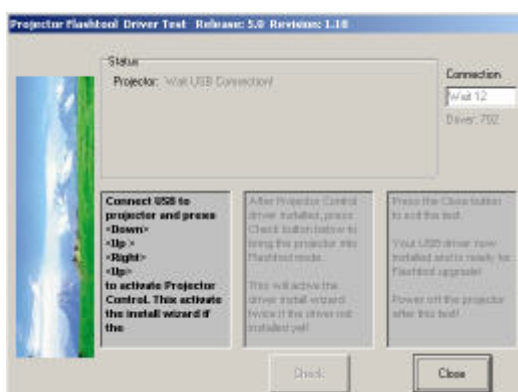
Installing WinDriver6...
Registering Projector USB Control with WinDriver6...
Congratulations! Driver Update Completed!

Note! If the Projector USB isn't plugged-in or activated, next time you plug it in and activated, the new Hardware wizard will run. Just accept the defaults and click "Next" to let the system update the driver.

Start the Flashtool test!

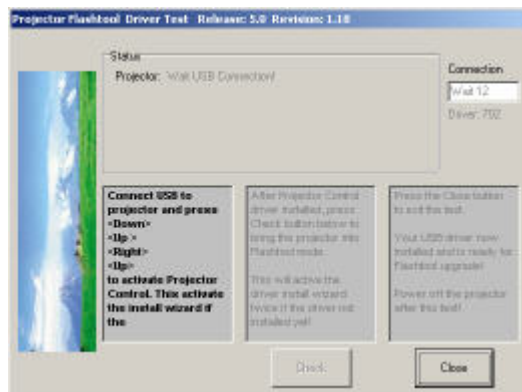
```

When finished, a test application will execute automatically with Windows hardware wizard for all necessary USB drivers.



- **Connect the USB cable**

If the driver test application does not launch automatically, run the “Launch FlashToolBL.exe” from installed shortcut at Program> Digital Zoom Projector> projector flashtool version 5> Launch FlasToolBL.exe

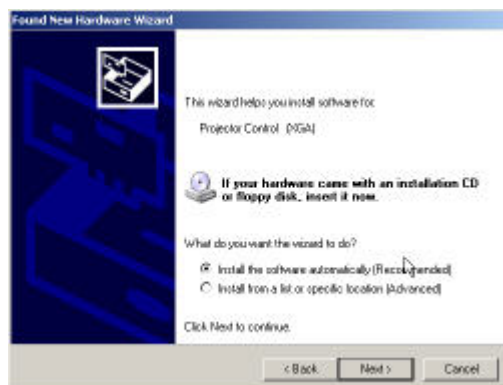


- Make sure that the USB cable is firmly connected between projector and computer
- Connect the power cord to the projector, and move the power switch in its ON position (if available) so that projector is in the STAND-BY mode.
- Press **<Down>**, **<Up>**, **<Right>**, **<Up>** key in sequence using keypad buttons, or using the IR remote controller for those with limited keypads. The power and lamp LED shall blink and the Projector Control mode will be enabled.

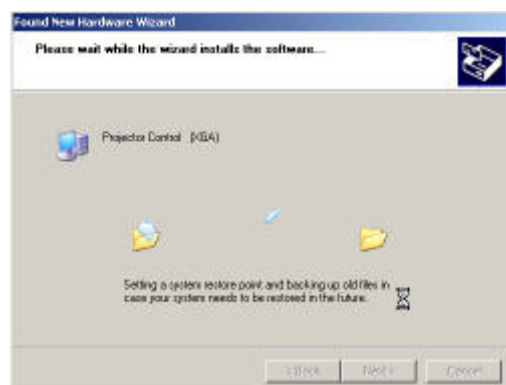


The New Hardware Wizard launches for **the first time**. Windows detects a new USB device attached.

- Select “No, not this time”
- Click on the “**Next**” button to continue (This dialog may change on different Windows version)



- Select “Install the software automatically”
- Click on the “**Next**” button to continue



Windows updates the USB Projector Control driver when found

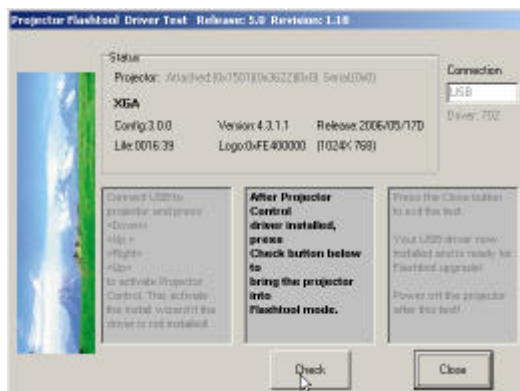


Windows completes the new hardware wizard.

- Press the **“Finish”** button to exit.

Note:

In case that you have a USB enumeration problem (i.e., the USB port cannot recognize your projector), please clear all USB items in the Windows registry, and re-install the Flash-Tool USB driver. See Appendix-A for further details.



Once when the Projector Control USB driver is enumerated, the projector information is displayed in the status window.

- Click on the **“Check”** button to place the projector in the Flash-Tool mode.

The purpose of this function is to verify whether or not the projector is successfully in the Flash-Tool mode.

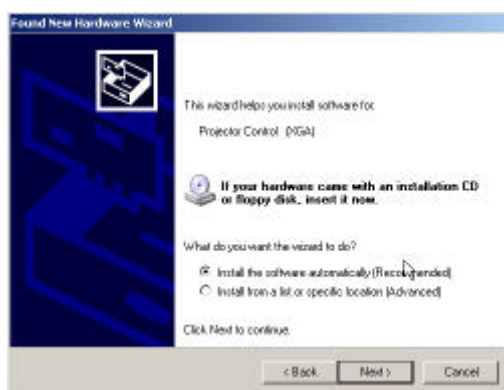
The projector is now in the Flash-Tool mode after the click.



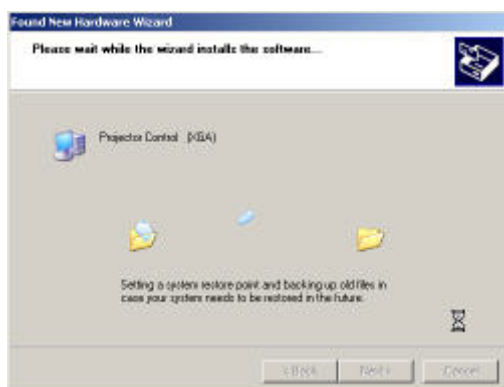
The Windows New Hardware Wizard will launch again for the second USB Projector Control.



- Select “No, not this time”
- Click on the “Next” button to continue



- Select “Install the software automatically”
- Click on the “Next” button to continue

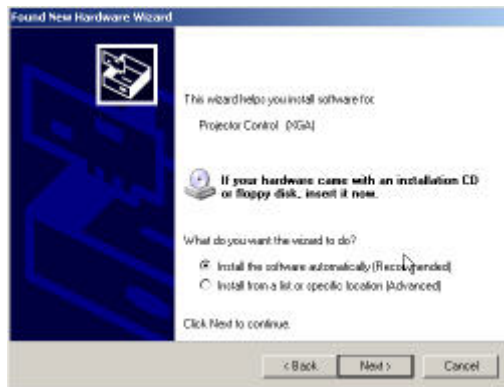


Windows updates the USB Projector Control driver when found

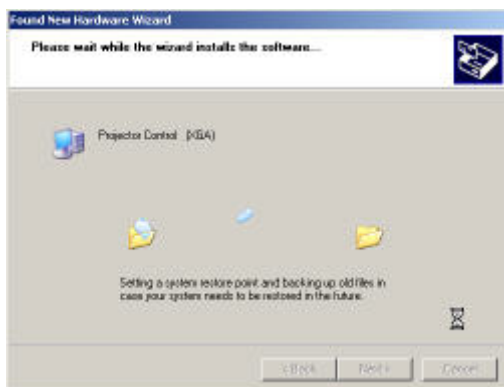


The New Hardware Wizard launches, and Windows detects a new USB device attached.

- Select “No, not this time”
- Click on the “Next” button to continue



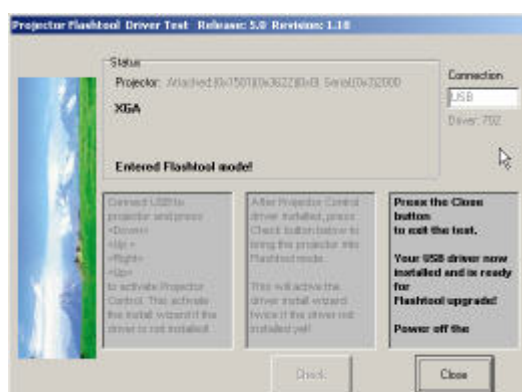
- Select “Install the software automatically”
- Click on the “**Next**” button to continue



Windows updates the USB Projector Control driver when found



Windows completes the new hardware wizard. Press the “**Finish**” button to exit



Congratulations!

- Power off the projector now
- Your driver has been checked and works for Flash-Tool.

Appendix-A

How to clear the USB enumeration registry?

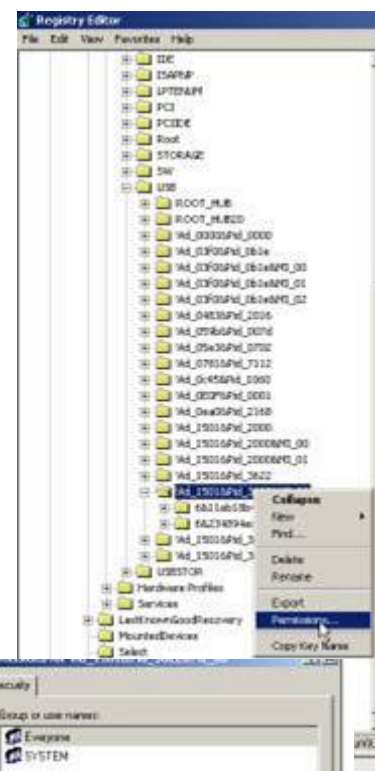
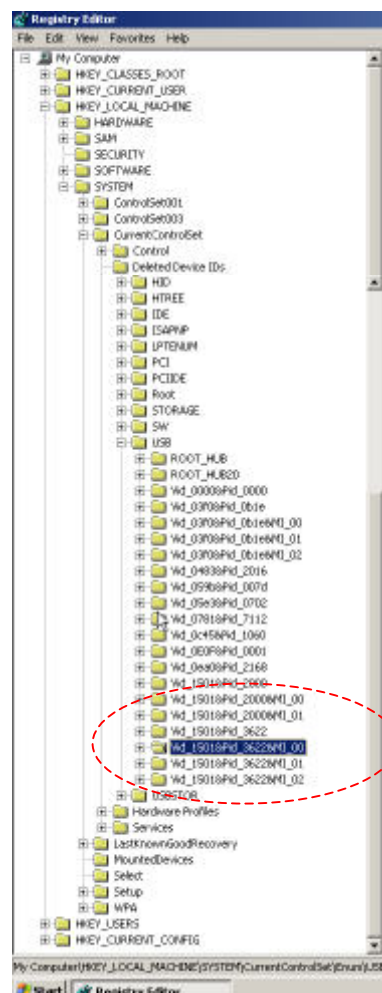
Run "regedit" and select the following items

HKEY_LOCAL_MACHINE->SYSTEM->CurrentControlSet->Enum->USB->

The E400/AV/DP2601	<u>VID 1501&Pid 2601xxx</u>
The AV/DP2618 series	<u>VID 1501&Pid 2618xxx</u>
The AV/DP3618 series	<u>VID 1501&Pid 3618xxx</u>
The DP3602 series	<u>VID 1501&Pid 3602xxx</u>
The DP3616 series	<u>VID 1501&Pid 3616xxx</u>
The DP3622 series	<u>VID 1501&Pid 3622xxx</u>
The PR301x series	<u>VID 1501&Pid 2617xxx</u>
The PR302x series	<u>VID 1501&Pid 3617xxx</u>
The PR50xx series	<u>VID 1501&Pid 3622xxx</u>
The EP77x series	<u>VID 1501&Pid 3622xxx</u>

...

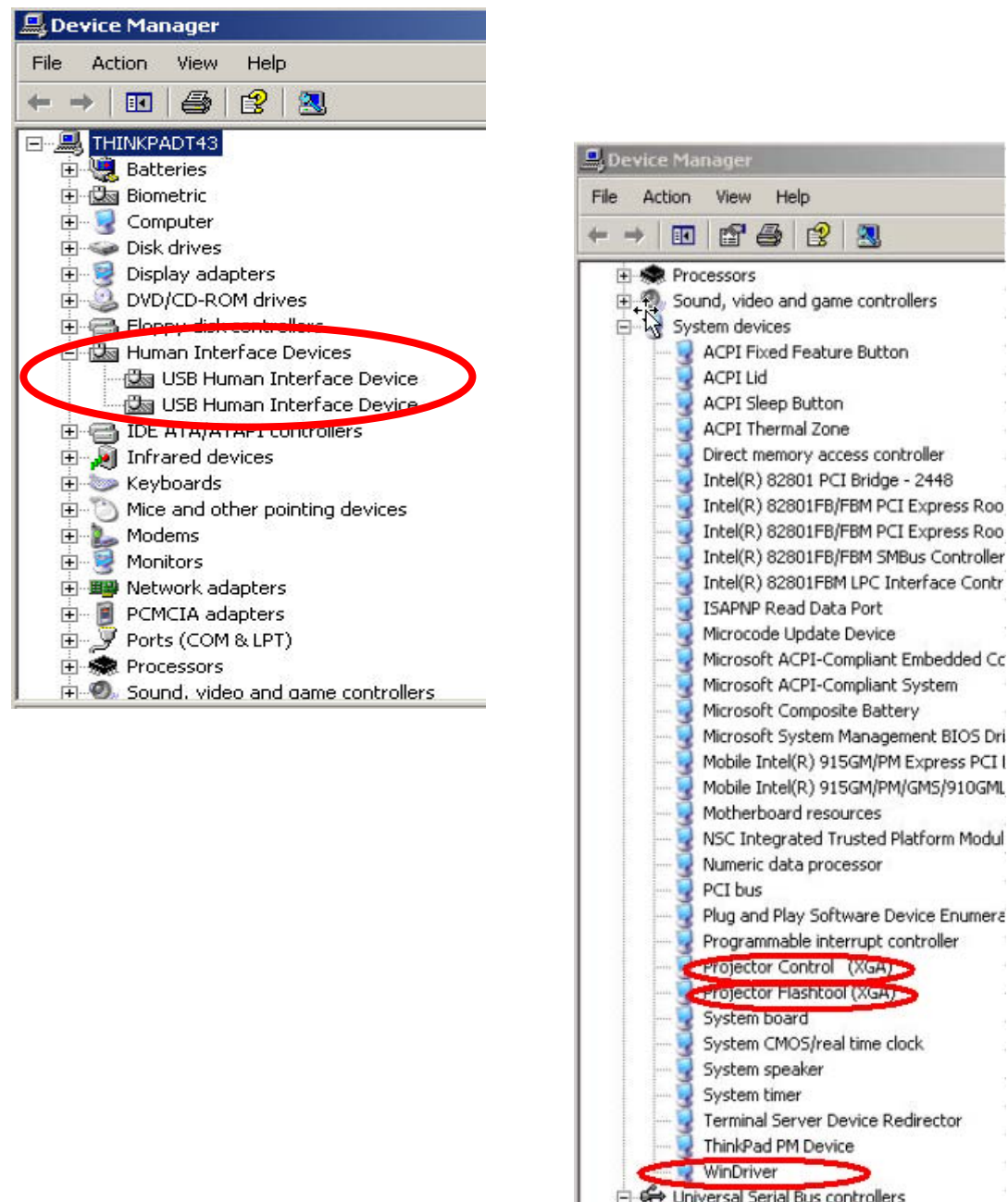
Press <Delete> and remove these registries. (You need the read/write privilege of the Windows registry to delete it. Select the item and click right mouse will lead you to the Permissions dialog for applying the security options)



Appendix-B

Projector USB status on Windows Device Manager

The USB HID device will be installed automatically via Windows' USB hot-plug mechanism.



The Projector Control will be dynamically installed after entering the maintenance mode (Press <down>, <up>, <right>, <up> key in sequence); The Projector Flashtool will be dynamically installed when starting the flash upgrading by Flashtool or FlashtoolBL utility. The Windriver is the root driver for both Projector Control and Flashtool.